

WILL YOUR BUSINESS BE AFFECTED BY THE EU TIMBER REGULATION?

What is the EU Timber Regulation?

Will it affect your business?

What are the solutions?

**The EU Timber Regulation will be
applicable from March 2013**



What is the EU Timber Regulation?

The EU Timber Regulation is binding legislation that the European Union is implementing to **tackle illegal logging** in the world's forests.

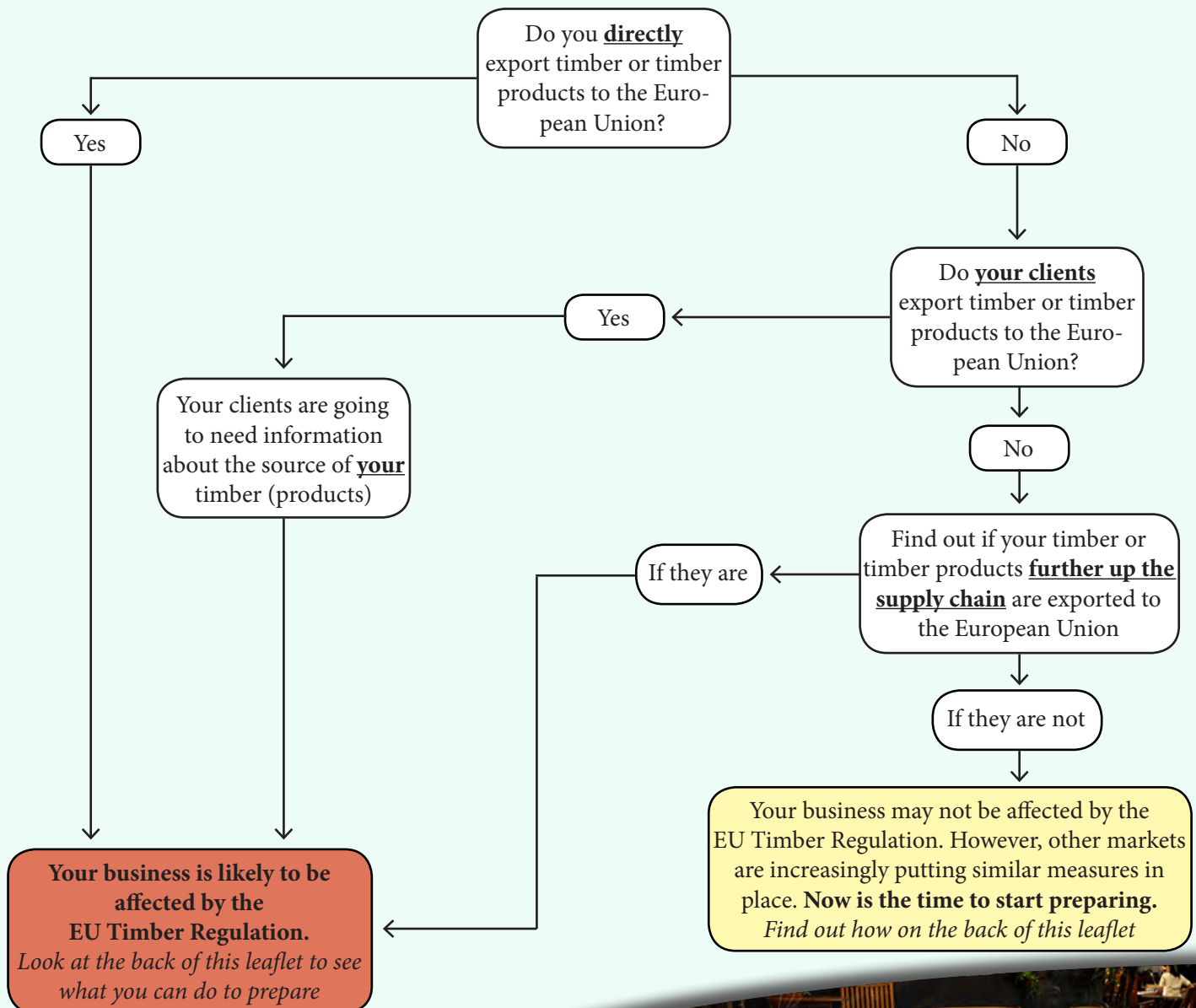
From **March 2013** the EU will prohibit the placing of illegally harvested timber and products derived from such timber on the EU market. The definition of **legal timber** is based on the law of the country of harvest.

Operators who are placing timber on the market for the first time, either imported or harvested in the EU, have to exercise "**due diligence**": they need to have access to information on e.g. their supplier, the tree species, the country of harvest of the timber and need to take steps to ensure that their supply contains only legally harvested timber.

The **product scope** includes timber and a wide range of timber products including furniture, pulp and paper.



Will the EU Timber Regulation affect your business?



What are the solutions?

1

Know the source of your timber

From March 2013, operators on the EU market will increasingly need to know where the timber in products was harvested. The Regulation does not only apply to logs and sawnwood, but also to timber used in furniture, paper and other tertiary processed timber products. By having documented knowledge of where your timber comes from, and by mitigating the risk of sourcing illegally harvested timber, you can stay ahead of the game and maintain market access.

2

Voluntary Partnership Agreements (VPAs)

These bilateral agreements between the European Union and timber exporting countries aim to ensure that the wood exported to the EU is from legal sources and to support partner countries in improving their own regulation and governance of the sector. For timber business this means that all timber products with a FLEGT license will be considered to be compliant with the EU Timber Regulation and therefore no further due diligence measures will be required from a private actor.

For more information, visit www.euflegt.efi.int or contact the European Forest Institute's EU FLEGT Asia regional funding via info@euflegt.efi.int

This Action is funded by the European Union and the governments of Finland, France, Germany, the Netherlands, Spain and the UK. The views expressed herein can in no way be taken to reflect the official opinion of the European Union.

